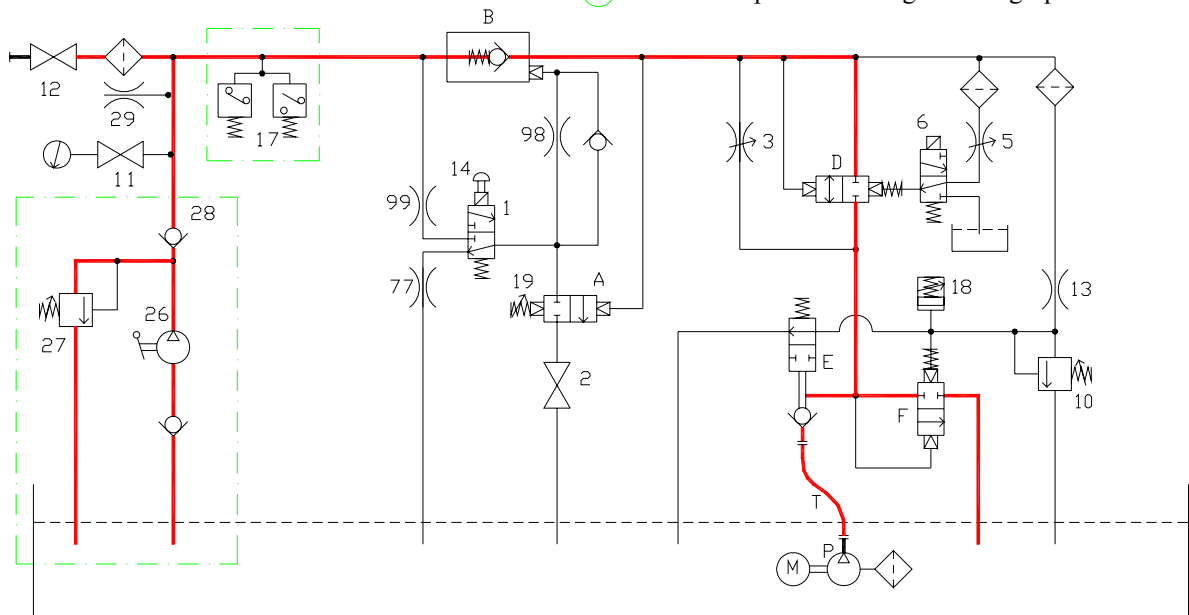


- 1 Downstroke solenoid valve
- 2 Drop test fastening
- 3 Downstroke and upward low speed adjusting screw
- clockwise decrease (-)
- anticlockwise increase (+)
- 5 Deceleration time adjusting screw
- clockwise increase (+)
- anticlockwise decrease (-)
- 6 High speed solenoid valve
- 7 High speed adjusting screw (*)
- 10 Maximum pressure valve adjusting screw
- clockwise increase (+)
- anticlockwise decrease (-)
- 11 Gauge cut-out cock
- 12 Valves cut-out cock
- 13 Upward start throttle
- 14 Emergency downstroke push button
- (17) Pressure switches
- 18 Calibrate of the time upward start
- clockwise decrease (-)
- anticlockwise increase (+)
- 19 Calibrate downstroke speed
- clockwise increase (+)
- anticlockwise decrease (-)
- (26) Hand pump
- (27) Hand pump safety valve adjusting screw
- clockwise increase (+)
- anticlockwise decrease (-)
- (28) Hand pump non-return valve
- 29 Air bleed (hand pump)
- 77-98-99 Regulation throttle (*)

- A Pressure regulator assembly
 B Pilot-operated non-return valve
 D Speed shift valve
 E Pump non-return distributor valve
 F Upward starting and safety valve
 M Motor
 P Pump
 T Flexible pipe

(*) THESE ELEMENTS ARE FACTORY SET.
 ADJUSTMENT SHOULD ONLY BE
 CARRIED OUT VIA MANUFACTURE'S
 TECHNICAL SPECIFICATIONS

- h - Downward stop contact
 f - Downward starting reducing speed contact
 d - Upward stop contact
 b - Upward starting reducing speed contact



**VALVE ASSEMBLY AND DIAGRAM
 PUMP UNIT 03/E
 DIRECT EXECUTION**

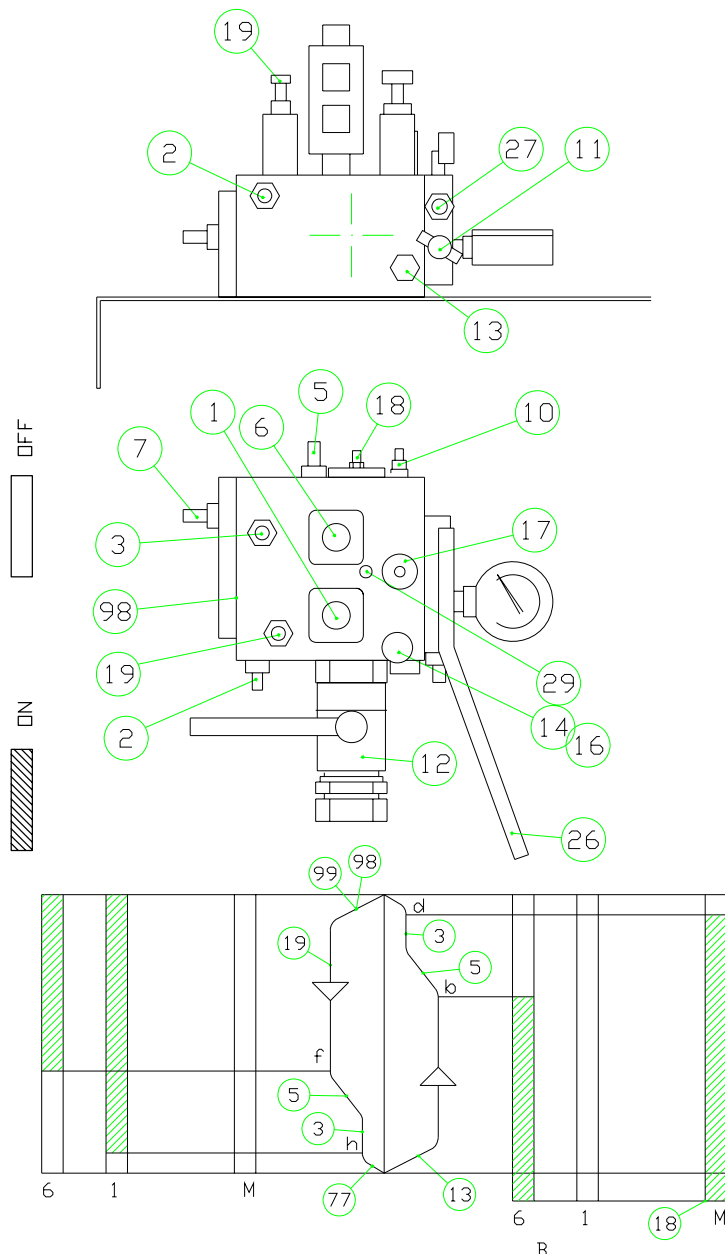


Start Elevator

06 420 / G

rev. 0

1/2

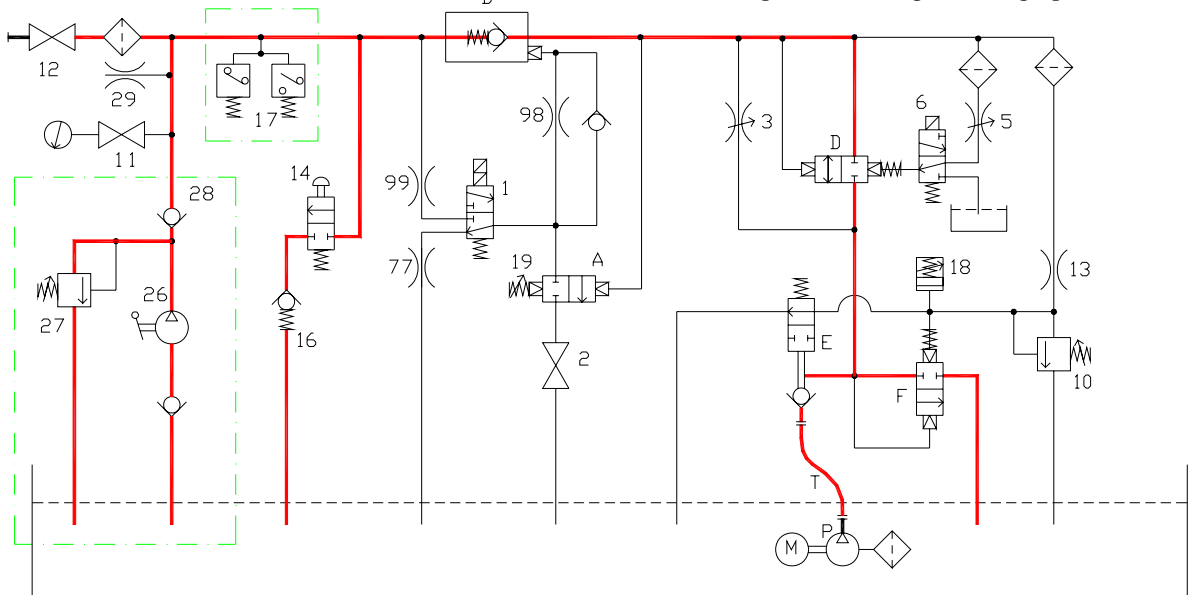


- 1 Downstroke solenoid valve
- 2 Drop test fastening
- 3 Downstroke and upward low speed adjusting screw
 - clockwise decrease (-)
 - anticlockwise increase (+)
- 5 Deceleration time adjusting screw
 - clockwise increase (+)
 - anticlockwise decrease (-)
- 6 High speed solenoid valve
- 7 High speed adjusting screw (*)
- 10 Maximum pressure valve adjusting screw
 - clockwise increase (+)
 - anticlockwise decrease (-)
- 11 Gauge cut-out cock
- 12 Valves cut-out cock
- 13 Upward start throttle
- 14 Emergency downstroke push button
- 16 Non-return valve (against rod downstroke)
- (17) Pressure switches
- 18 Calibrate of the time upward start
 - clockwise decrease (-)
 - anticlockwise increase (+)
- 19 Calibrate downstroke speed
 - clockwise increase (+)
 - anticlockwise decrease (-)
- (26) Hand pump
- (27) Hand pump safety valve adjusting screw
 - clockwise increase (+)
 - anticlockwise decrease (-)
- (28) Hand pump non-return valve
- 29 Air bleed (hand pump)
- 77-98-99 Regulation throttle (*)

- A Pressure regulator assembly
 B Pilot-operated non-return valve
 D Speed shift valve
 E Pump non-return distributor valve
 F Upward starting and safety valve
 M Motor
 P Pump
 T Flexible pipe

(*) THESE ELEMENTS ARE FACTORY SET.
 ADJUSTMENT SHOULD ONLY BE
 CARRIED OUT VIA MANUFACTURE'S
 TECHNICAL SPECIFICATIONS

- h - Downward stop contact
 f - Downward starting reducing speed contact
 d - Upward stop contact
 b - Upward starting reducing speed contact



**VALVE ASSEMBLY AND DIAGRAM
 PUMP UNIT 03/E
 INDIRECT EXECUTION**



Start Elevator

06 420 / G

rev. 0

2/2