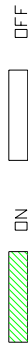
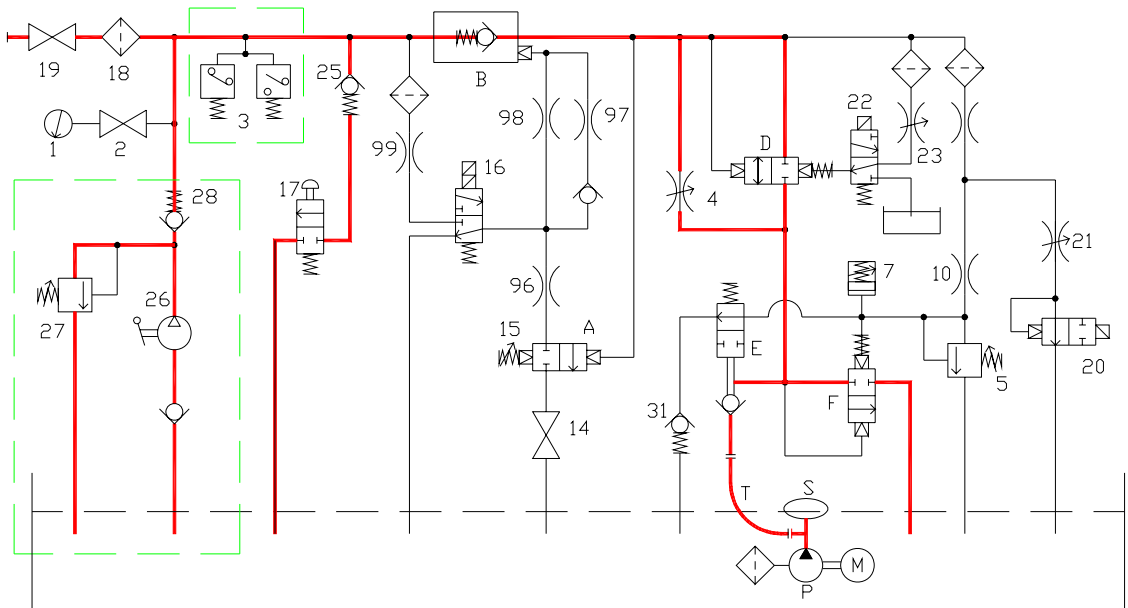


- 1 Gauge
  - 2 Gauge cut-out cock
  - 3 (Pressure switches)
  - 4 Low speed adjusting screw  
- clockwise decrease (-)  
- anticlockwise increase (+)
  - 5 Maximum pressure valve adjusting screw  
- clockwise increase (+)  
- anticlockwise decrease (-)
  - 7 Motor start time adjusting screw  
- clockwise decrease (-)  
- anticlockwise increase (+)
  - 10 Upward start throttle
  - 14 Test fastening screw
  - 15 Downward speed adjusting screw  
- clockwise increase (+)  
- anticlockwise decrease (-)
  - 16 Downstroke solenoid valve
  - 17 Emergency downstroke pushbutton
  - 18 Filter (inside the valve assembly)
  - 19 Valve cut-out cock
  - 20 Upward stop solenoid valve (Soft Stop)
  - 21 Upward stop time adjusting screw  
- clockwise increase (+)  
- anticlockwise decrease (-)
  - 22 Speed shift solenoid valve
  - 23 Speed shift time adjusting screw  
- clockwise increase (+)  
- anticlockwise decrease (-)
  - 25 Emergency downstroke minimum pressure valve
  - 26 (Hand pump)
  - 27 (Hand pump safety valve adjusting screw)  
- clockwise increase (+)  
- anticlockwise decrease (-)
  - 28 (Hand pump non-return valve)
  - 29 Speed shift valve arrest screw (\*)
  - 30 Safety valve arrest screw (\*)
  - 31 Pilot circuit check valve
  - 96-97-98-99 Throttles
  - A) Pressure regulator assembly
  - B) Pilot - operated non-return valve
  - D) Speed shift valve
  - E) Pump non-return distributor valve
  - F) Upward starting and safety valve
  - M) Motor
  - P) Pump
  - S) Pump silencer
  - T) Flexible pipe
- (\*) THIS VALVE IS FACTORY SET. ADJUSTMENT SHOULD ONLY BE CARRIED OUT VIA THE MANUFACTURE'S TECHNICAL SPECIFICATIONS



- Downward stop contact
- Downward starting reducing speed contact
- Upward stop contact
- Upward starting reducing speed contact



**VALVE ASSEMBLY AND DIAGRAM  
PUMP UNIT  
93/E - SL Soft Stop**



**Start Elevator**

04 340 / G

rev. 0

1/1