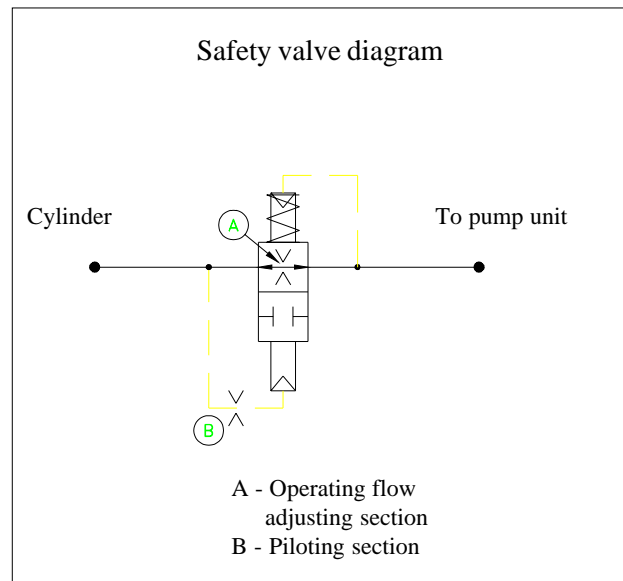
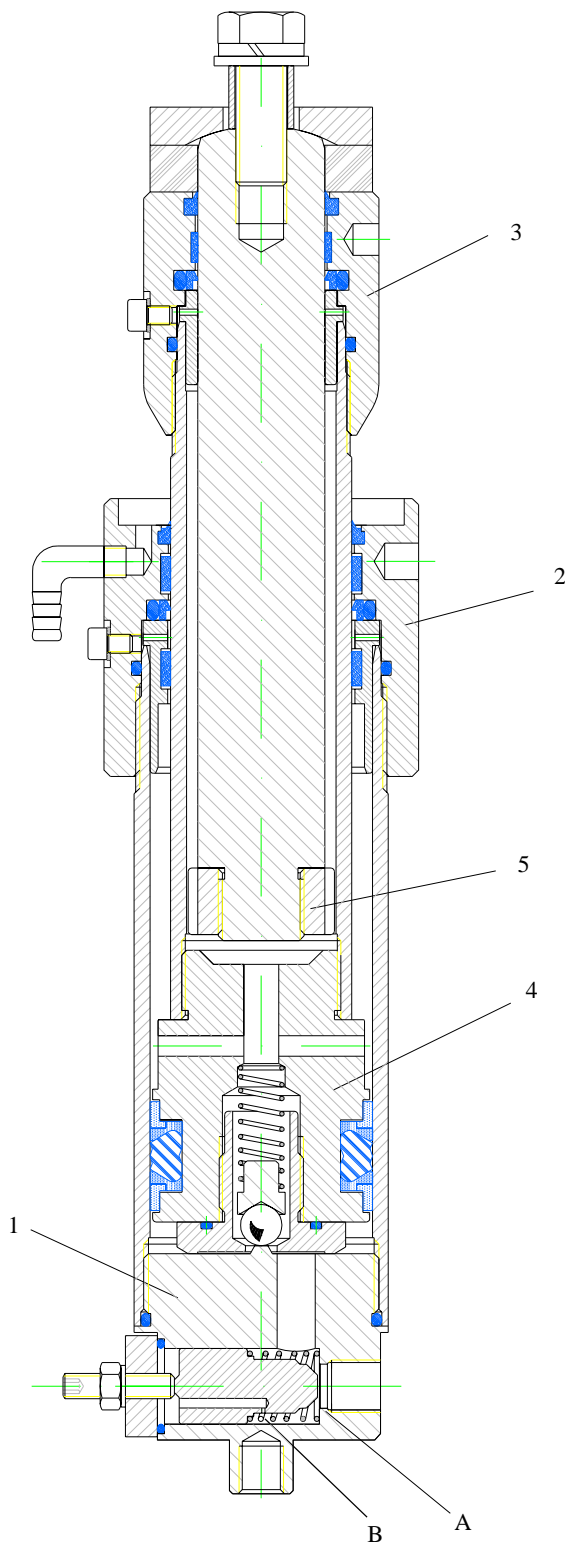


- 1 - Cylinder bottom
- 2 - Cylinder head
- 3 - Rod head
- 4 - Rod 2 bottom
- 5 - Rod 1 bottom

- mat FE52B UNI 7070
- mat FE510 UNI 7729
- mat FE52B UNI 7070
- mat FE52B UNI 7070
- mat G25 UNI 5007

- thread M74 x 2.5 len. 19 mm
- thread M79 x 2.5 len. 27 mm
- thread M56 x 2 len. 22 mm
- thread M50 x 2 len. 19 mm
- thread M27 x 12 len. 21 mm



Valve adjustment instructions

The following tables give instructions to adjust the block valves on the basis of the litres normally used in the pump unit.

Once acquainted with the value of the adjusting turns, turn anticlockwise the valve cap, loosen the lock nut and turn clockwise the adjusting screw to the closing valve limit. Then turn it anticlockwise to reach the adjusting value previously calculated.

Tighten the lock nut and turn the cap clockwise checking if there are oil leakages.

An intervention test is then recommended, following the instructions of the pump unit manufacturer.

OPERATING FLOW WITH OIL VISCOSITY FROM 14 TO 290 cSt

Litres/min Pump Units	Adjusting turns	Litres/min operating
8	2	13
12	2 - 1/4	23
16	2 - 1/2	32
25	2 - 3/4	44
30	3	50
35	3 - 1/4	53

**DIMENSIONS AND CALCULATING DATA
TELESCOPIC PISTON 50/2
FOR PLATFORMS**



Start Elevator Srl

10 150 / G

rev. 3

2/2